

**committed  
to  
excellence**

## OUR MANAGEMENT



**RISHI KUMAR GUPTA**  
**FOUNDER**

A founder of the Company and an enthusiast, who has devoted 42 years in MEP contracting currently enlightening the Team of Expert Engineers



**GAURAV GUPTA**  
**DIRECTOR-BD**

A Co-founder of the Company and an Electrical Engineer. He is a great influencer and a Team Builder who is opening the new opportunity of growth.



**SAURABH GUPTA**  
**DIRECTOR-EXECUTION**

A talented personality, who sits at the helm of the organization, steering it, managing its operations, and carrying out its mission according to the strategic directions



## The Journey

The road to success and failure are exactly the same as success is the result of preparation, hard work and learning failure

To get through the journey we need to take only one step at a time. But we must keep on stepping.

If you can't fly, then run

If you can't run, then walk

If you can't walk, then crawl

but keep moving...

Success is a journey,  
not a destination.  
journey teach a lot  
about destination



From 2250 sqft to 80000 sqft  
From Power Press Punching to AMADA CNC Turret Punching  
From hand tool to Pneumatic technology  
From Excel to ERP  
and many more to achieve

# A QUALITY CONSCIOUS INNOVATION

To provide high quality products and services to customers by sustaining business growth, fostering innovations, driving values and protecting environment to be profitable in the process. We are also committed to maintain excellence, respect and integrity in all aspects of our operations, profession and business conduct. We intend to reflect the highest ethical standards in our relationships with our customers, vendors, employees and associates.





We are

## **Committed to Excellence...**

Excellence is an art won by training and habituation.

We do not act rightly because we have virtue of excellence  
but we rather have those because we have acted rightly.

We are what we repeatedly do.

**"Excellence, then, is not an act but a habit."**

QUALITY POLICY



# Think Big, Get Bigger

## Forecast

The day we started we work with hand tools, outsourcing the major component panel enclosure. Our thinking allows us to forecast our aim. Today we are working with laser technology and this allows us to forecast our new aim

“Our thinking and Attitude decide our Aim”

**Our Thinking**

# Why Choose Us?

---

- Customer Oriented
- Innovative Approach
- Rectification First Policy
- Prompt Response Guaranteed
- Database Management
- Close to Perfect Execution

**WE FOLLOW THE 6 GOLDEN RULES**



# SPECIALIZATION

Our company specializes in LV/MV panel manufacturing, delivering custom power distribution solutions. We offer turnkey project management, handling everything from design to commissioning. Our automation solutions optimize efficiency and productivity, while our water solutions focus on sustainable treatment and management. We also provide comprehensive installation, maintenance, and support services.



**01** INDUSTRY

**Power Management  
To Automation**

**02** OIL & GAS

**Distribution  
Network**

**03** WATER

**Extraction  
To Disposal**

**04** INFRA

**Govt. Departments  
& Consultants**

**05** RAILWAYS

**Redevelopment  
Work**

**06** RENEWABLE  
SECTOR

**Generation to  
Distribution**



Main Category	Sub Category	Products
LV/MV Panels Manufacturing	LV Panels MV Panels Bus Bar Trunking Compact Substations L&T TTA C&S TTA Siemens TTA	PCC, MCC, ATS, DG Synchronizing Panels, AMF, APFC, Solar 800V LT Panels 11/33KV HT VCB, 3.3/6.6/11KV HT DOL Starter, APFC LT Conventional Air Bus Duct, LT Sandwich Bus Duct 11/33KV, 400-2000KVA IEC 61439 - Enersys IEC 61439 - CX IEC 61439 - SIEPAN
Turnkey Projects	Electrical Mechanical	High/Low Electrification, Lighting, Earthing & Lightning Protection System Bridge Fab, DG Stack, Cable Tray Structure, Vessels, Dismantling Joints
Automation Solutions	Load Management System SCADA System EMS/BMS Special Purpose Machines Automation FRTU, Modems	Process Automation, WTP/STP/ETP, SCADA, Smart Cities, Irrigation Central SCADA
Water Solutions	Waterworks / Wastewater / Irrigation Borewell Automation System Pumps/Valves Others	SCADA System, E&M Contracts, Substation Installation SCADA System, E&M Contracts All Type of Pumps & Valves Filtration Vessels, Smart Valves, Flowmeters
Services	Retrofitting Audits Testing AMC Misc	PCC, MCC, ATS, DG Synchronizing Panels Energy, Power Factor, Earthing & Soil Test Reports Transformer, Cable, HT Panels, Relay Testing LT/HT Panels Transformer Oil Filtration & Dehydration, Relay Coordination & Programming





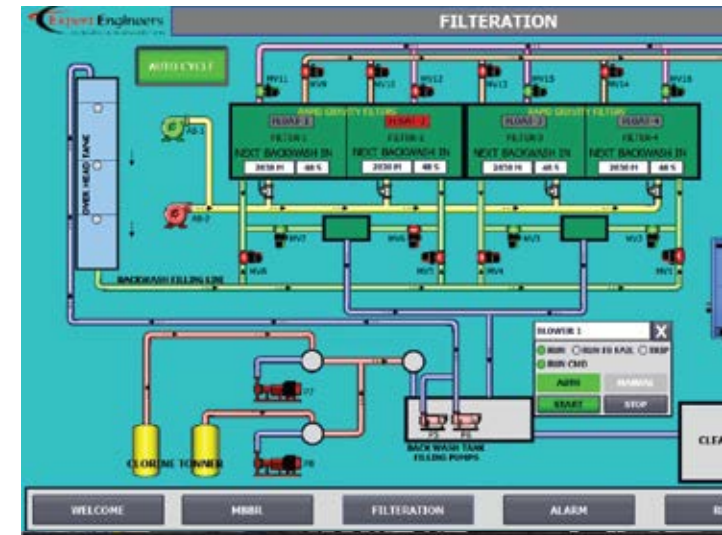
## LV / MV MANUFACTURING

- **LV Panels** - Low voltage panels.
- **MV Panels** - Medium voltage panels upto 33kv.
- **Bus Bar Trunking** - Efficient power distribution via bus bars.
- **Compact Substation** - Integrated substation for space - saving solutions.
- **Cable Tray** - Perforated cable trays for industrial, commercial and residential construction to route electrical wires and cables through the building structure safely.



## TURNKEY PROJECT

- **Electrical Turnkey Projects** - Expert in HT/LT electrification, lighting, earthing, and lightning protection systems.
- **Mechanical Turnkey Projects** - Precision-driven solutions ensuring flawless, budget-friendly execution of DG Stack, Bridge Fabrication, Cable Tray Structures, Vessels, Dismantling Joints etc.



## AUTOMATION SOLUTION

- **Load Management System** – Optimizes power distribution, prevents overloads.
- **SCADA System** – Real-time monitoring, control of industrial processes.
- **Energy Management System (EMS)** – Enhances energy efficiency, reduces operational costs.
- **Building Management System (BMS)** – Automates HVAC, lighting, and security controls.
- **Special Purpose Machine Automation** – Custom machines for specific industrial automation.
- **FRTU & Modems** – Enables remote communication for monitoring systems.





## WATER PROJECTS

- **Water Works** – Solutions for water supply systems.
- **Waste Water** – Treatment and recycling of wastewater.
- **Borewell Automation System** – Automated groundwater extraction control.
- **Pumps** – Efficient fluid transfer and circulation.
- **Valves** – Regulate fluid flow in pipelines.
- **Filtration Vessels** – Remove impurities from liquids.
- **Smart Valves** – Automated flow control with sensors.
- **Flow Meters** – Measure liquid flow rates accurately.



## SERVICES

- **Retrofitting Works** – Upgrading old systems for better performance.
- **Audits** – Assessing system efficiency, compliance, and safety.
- **Testing** – Ensuring system reliability and performance standards.
- **AMC (Annual Maintenance Contract)** – Regular servicing for long-term efficiency.
- **MISC Services** – Various support solutions for system maintenance.



## Enterprise Management

- ERP and CRM System drive complete workflow
- Solidworks is used for 3D Modelling of every Panel
- Estimation and costing software are used
- Customer accessed database portal is provided for instant supporting documents download
- Service support managed by dedicated designed application



## Fabrication

- Laser Cutting technology is used for high accuracy and finish
- CNC Bending Machine results high productivity
- Flux free strong joints achieved by MIG Welding Technology
- Form 4b and 3b construction adopted
- Supported by Shearing Machine, Power Presses, Spot Welders, Pneumatic Tools, etc.



## Surface Treatment & Power Coating

- Surface preparation for proper adhesion of Powder is done by conditioning of sheet in 11 tank process with heating and aeration that results strong and durable coating
- Automatic PLC Controlled 11 tank treatment system for precise and faster operation
- German made Electrostatic Guns are used to achieve 60-80 micron controlled coating
- Panel are baked in automatic Temp Controlled Oven at defined temp to maintain colour as per RAL Standards





## Assembly

- Pneumatic Torque Wrenches used for torque controlled tightening
- Trivalent coated fasteners for longer life High adhesive and quality gaskets for proper Ingress protection and durability
- 3 in one PLC controlled Busbar Processing Machine
- Prescribed insulation and shrouding of busbar done with perforated Bakelite and acrylic sheets



## Wiring

- Highly experienced engineers design the wiring diagram to ensure requisite functioning of panel
- Proper Labelling of internal components and switchgear
- FRLS-H wires used in Panels
- High quality Accessories
- Proper ferruling and thimbling is done with canon ferrule printing machine, crimping tools, screw drivers, etc



## Quality Control & Testing

- Inward material Quality check with help of ERP
- In process Quality check and assurance according to QAP
- Proper Functioning test and BOM check is performed on all the panels
- 5KV HV testing
- Primary Injection Kit, CT testing kit, Meggar. DFT Meter





## WE DO ENGINEERING

To increase life of fasteners

To increase life of gaskets

To increase life of powder coating

To provide best & easy termination with cable alley design

To design the logic to work as required by the system

## ENERGY CAN NEITHER BE CREATED NOT BE DESTROYED

It just changes from one form to another, i.e. coal, water, nuclear to electricity and then electricity to light, heat, noise etc.

Electricity is vital for the development of society and an essential element for meeting the principal social challenges of sustainable development.

"The electricity is a clean energy that generates no waste in its end use"

# MANUFACTURING FACILITIES

AMADA CNC Turret Punching Machine  
AMADA 3m 110 Ton Bending Machine  
Laser Cutting Machine  
Laser Marking Machine  
Bending Machine (CNC-Hydraulic)  
Shearing Machine (NC-Hydraulic)  
CNC Bus Bar (3-in-1) (Cutting, Bending and Punching) Machine  
Power Press Machine 0-50 T  
Power Press Machine 0-20 T  
Automatic 11 Tank PT line with Drying Oven & Boiler  
Automatic Conveyorized Baking Oven with Booth  
Welding Machine (MIG)  
Cable Tray Perforating Machine  
CNC 8 ft x 4 ft Wood/Acrylic Cutting  
Router  
Ferruling Machine  
FRP Sheet Cutting Machine  
5 Ton Fork Lifter  
Air Reciprocating Compressor (11 KW)  
D.G. Set



Expert Engineers and Automation Pvt Ltd



# TESTING EQUIPMENT

2000A Primary Injection Kit  
30kV HV Testing Kit  
75kV HV Testing Kit  
Conductivity Meter  
1000V Megger  
5000V Megger  
AMF Testing Kit  
5KV HV Tester  
CT Testing Kit  
DFT Meter  
Micrometre  
PH Meter

Expert Engineers and Automation Pvt Ltd



## LV PANELS

Our electrical distribution and protection solutions built to withstand the rigors of the most demanding environments and industrial facilities and utilities. We do design and engineering to implement IEC standards and IP levels to practicality.

Our build panels are blend of customer needs standards and our experience.

We produce a numerous range of LV Panels to create a single window for our customer.

Power Control  
Centres (PCC)

Motor Control  
Centres (MCC)

Auto Transformer  
Starters

DG Synchronizing  
cum AMF Panels

Busbar  
Trunking  
System

LT Kiosk  
Panels

Busbar  
Chamber

Applications : Every where Electricity exists

Expert Engineers and Automation Pvt Ltd



## SOLUTION FOR SOLAR SEGMENTS

We are a leading manufacturer of all types of electrical control panels tailored for solar power projects. With a strong commitment to quality and innovation, we provide reliable, efficient, and tested solutions to meet the demanding needs of the renewable energy sector.



800V  
CSS

11 KV  
VCB Panels

33KV  
VCB Panels

ACDB  
Panels

BESS

Expert Engineers and Automation Pvt Ltd



## E-Protec

The Low voltage Switchboards/ panels that meets the IEC 60439-3 standards, with total operational and maintenance security because of their characteristics TTA.

Developed to meet the requirements of the switchboards loads of high electrical currents and high levels of short-circuit current, with switchgear equipment and protection that meet the requirements of quality, security and performance.

**Their modularity allows future expansions without having to make adjustments during assembly, the modular structure is simple to install and sizing**

- Power control centres (PCC PANELS)
- Communication capable intelligent power control centres (IPCCs)
- Energy management PCCs for Plant & Building
- Motor control centres – Fuseless and with Fuse
- Intelligent motor control centres (IMCCs)
- Integrated PMCCs for Ethernet connectivity
- Automatic power factor correction panels

### List of tests for complete design verification

- List of tests for complete design verification
- Construction Requirement:
- Strength of material and parts
- Degree of protection of enclosures
- Clearances
- Creepage distances
- Protection against electric shock and integrity of protective circuits
- Incorporation of switching devices and components
- Internal electrical circuits and connections
- Terminals for external conductors



## Features

### Verification by comparison:

Structured comparison of a proposed design of an assembly or parts of an assembly with a reference design verified by test.

### Verification by assessment:

Design verification of strict design rules or calculations applied to a sample of an ASSEMBLY or on parts of ASSEMBLIES to verify that the design meets the requirements of the relevant assembly standards.

### Verification by test:

Test made on a sample of an ASSEMBLY or on parts of ASSEMBLIES to verify that the design meets the requirements of the relevant assembly standards.

## E-Proficient

E-proficient is IS-8623 Certified Assembly assuring hassle free working and reliability. The product is designed for the customers who understand the practicality of their requirement. Our E-proficient is a fusion of experienced design and engineering mainly focusing on the working and life of Electrical Panel. Here we do engineering on Panel and Accessories ageing which is are the most indispensable and Vital points.

Application	Control & Protection of Transformer Power
Reference Standard	IEC 62271-200:2003/ IS : 3427:1997
Operational Voltage	12 kV
Operational Current	630A to 1600A
Phase/Frequency	3 Phase/ 50 Hz
Insulation Level	28 kVrms/ 75 kV Peak
Short Time Rating	20/26.3/31.5/ 44 kA
Peak Withstand Current	50/66/80/110 kA Peak
Degree of Protection	IP-54 (Indoor) / IP-55 (Outdoor)
Internal Compartment	IP-2X
Max. Temp. Rise	40°C over 45°C ambient
Relative Humidity	95%
Special Test	Internal arc tested at 10kA for 0.1Sec



## Features

Optimum design that gives easy termination and flawless ventilation keeping the ambient parameters in permissible limit.

Complementary Commissioning and installation supervision report of the Electrical Panel is provided after analysing of total Distribution system to ensure errorless installation.

## E-elliptical

E-Elliptical Packaged Substations are available upto 24KV. The fully equipped packaged substation (PSS), comprises of outdoor duty enclosure, medium voltage switchgear, distribution transformer, low voltage panel & AFPCR panel (optional) is a state of art equipment for all your power distribution requirements. The factory assembled self-contained package substation is a complete weather proof solution. It only requires to connect incoming and outgoing cables and hence the site work involved is an absolute minimum.

It a ready to position solution, provided with four lifting eyes located on the roof for ease of lifting, positioning and placement on a concrete base with the help of crane.

Each substation consists of three main equipment: Transformer, MV switchgear, and LV Switchgear. All the equipment is packed in a separate compartment and accessible individually using the respective compartment door

Parameter	Value
Standard colour	RAL 7032
Installation	out door
Compartmented	Yes
Optional degree of protection MV/LV Compartment	IP 54
Optional degree of protection Transformer compartment	IP 23
Rated enclosure class	K 5 - 10
Rated voltage (kV)	11/33 kV
Rated insulation level kV rms, 50 Hz 1 min.	28 kV
Rated Current of MV switchgear/CB's (A)	630A
Max. allowable impulse current withstand kA rms	21 kA
Maximum LV Current (A)	3200A
LV Current withstand (kA)	50/65 kA

## Features

### Cost effective and economical

- Using a Package Sub Station helps to reduce both capital expenditures and operational expenditures.

### Assured higher safety

- EHS performance is improved thanks to Smart Communication and on-site presence

### Time saving

- Delivered in ready to use condition, a PSS saves precious time & money on-site as well.

### Optimized footprints

- Due to its modularity and qualified compact design the footprints are at minimum.

### End to End solution

- Everything taken care as per your requirement in one go from planning to the installation and commissioning.

### Reduced project risk

- The civil, mechanical and electrical expertise incorporated in each custom-fabricated PSS solution returns benefits that minimize costs and support performance.





## E-Vaccube

Type VHIH Switchgear is totally metal - clad and compartmentalized. The switchgear is completely assembled, wired - up and tested in the factory before delivery.

The VHIH panel is fabricated from high grade pickled and oiled steel sheets, which are chemically treated before painting to provide adequate protection against corrosion and weathering. The Panel consists of four mutually separated

<b>Standards</b>	IEC 62271-100, IEC 62271-102, IEC 62271-200
<b>Voltage</b>	12/ 24/ 36 kV
<b>Frequency</b>	50 / 60 Hz
<b>Normal Current (A)</b>	800/ 1250/ 2000/ 3150A
<b>Short Time Current Rating</b>	26.3/ 31.5/ 40 kA
<b>Duration of Short Circuit Withstand</b>	3 Sec
<b>Making Capacity</b>	65.75/ 79/ 100/ 125 kA
<b>Impulse With stand Voltage</b>	75 / 95/ 125/ 170 kVp
<b>One Minute Power Frequency Withstand</b>	28 / 38/ 50/ 70 kV (rms)
<b>Suitable for Operating Sequence</b>	O-0.3 sec-CO-3 min-CO
<b>Break Time</b>	3 Cycles
<b>Mechanical Life</b>	10,000 operations
<b>Degree of protection</b>	IP4X (Higher IP on request)
<b>Closing &amp; Tripping coil voltage</b>	24V, 30V, 110V, 220V DC
<b>Spring charging motor voltage</b>	110V, 220V DC / 110V, 230V AC



## Compartments

- Circuit Breaker Compartment
- Cable & CT Compartment
- Busbar Compartment
- Low Voltage Compartment

## LT Power Factor Management System

Power Factor Control Panels are extensively used in industries, commercial buildings, housing etc. to improve power factor. The constantly rising power tariff and penalties imposed by the State Electricity Boards/Utility companies make imperative for any HT & LT Industry/Consumer to install and automatic power factor penalty and also to save energy by consistently maintaining higher power factor. Low power factor leads to poor power efficiency thereby increasing the apparent power drawn from the distribution network.

### Advantages

- Minimizing the line Losses, thus saving Power Consumption.
- Decrease in the downtime and enhanced performance of the connected equipment.
- Curtailment of Leading Power Factor.
- Reduction of Current Consumption Charges.

### Subcategory

- Normal APFC Panel - consisting of MCB's, contactors, capacitors
- Thyristor base APFC Panels - consisting of Fuse, Thyristors, Reactors, Capacitors
- Harmonics Reducing APFC Panels - consisting of MCB's, Reactors

**Expert Engineers and Automation Pvt Ltd**



### Features

Ample Ventilated design with right size and positioning of exhaust fans and louvers to maintain proper air circulation across capacitors and reactors. This increases the life of Active and Passive components installed in Panel.

Selection of type, rating, steps of capacitors, reactors and switching devices is done after analysis of Load details and Energy quality audit report of premises, which ensures accurate PF Correction and long life.

## Auto Transformer Starter

Auto Transformer Starters are most popular electro mechanical reduced voltage starting devices providing maximum starting torque and minimum starting current for large induction motors where availability of starting current is limited but a minimal starting torque is required. An induction motor draws 6 to 10 times of full load current while accelerating to full speed if directly connected to power supply. With autotransformer starters the reduced voltage applied to the motor results in lower current and high torque.

Voltage	50% Voltage	65% Voltage	80% Voltage
Torque	25%	42%	64%
Line Current	25%	42%	64%
Motor Current	50%	65%	80%

The auto transformer starters manufactured by us are comprised of run contactor, start contactor, star contactor, motor protection relay for protection against overload, single phase, reverse phase, phase imbalance, earth fault, lock rotor current, under/over voltage etc. dry/oil immersed auto transformer, timers and other accessories.

To start the motor, first the star contactor is engaged followed by start contactor supplying reduced voltage through auto transformer limiting input current to stationary motor while accelerating. The motor continues to

Accelerate and after preset time of 8 to 12 seconds the star contactor is opened and momentarily even lower current is supplied by auto transformer winding acting like inductors connected in series with motor. The time is short, just enough to disconnect star contactor and engage run contactor to supply full voltage to the motor to accelerate to achieve full speed. At this point motor can work on full load and transformer is disengaged by opening start contactor.



### Features

ATS maintains a continuous power supply to the motor during the transition from reduced to full voltage. This avoids the high transient switching current characteristic & there is no danger of nuisance tripping. Also, the transition is smooth & no mechanical jerk is forced on the equipment.

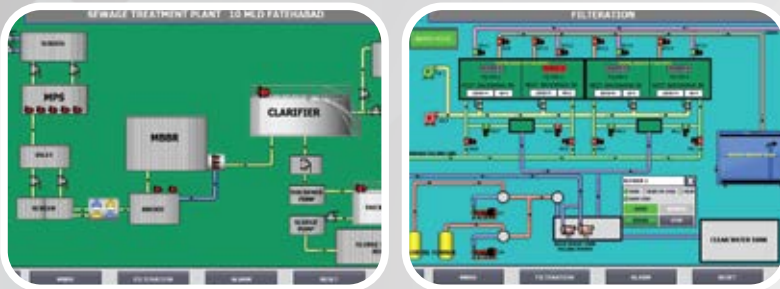
An ATS provides highest starting torque per ampere of line current drawn. So, it is best used where high torque is required to overcome the inertia of the load, & at the same time starting current must be limited to minimum.



# Water / Seaways Treatments

## WTP/STP/SCADA

Our numerous installations of WTP and STP SCADA systems enable us to experience and find the real meaning of SCADA. It should be designed to make control and monitoring easy for the operator so that he can easily perform the required task via computer.



We are having an experienced team for understanding and analysing of customer requirement for Automation, Control and Monitoring of their Treatment Plant and equipment installed. This results in correct and timely execution of complete systems as per satisfaction level of customer.

### Our Design Features

- Reporting through graphical representations
- Data Logging
- Historian
- Lowest Maintenance
- Easy to use
- Optimum designing
- Proper Feedback with representation



“supervisory control  
and data acquisition”

## Pumps Management System

Water is the most important and first need of every living being. Water has numerous uses in different sectors like domestic, Agricultural and Industrial. To ensure proper distribution and availability, the system needs to be Automated, computerised, systematized, which is required to make the pumping system reliable and efficient.

There is a Central control Station from where all the Local Pumping Stations are controlled. This station communicates with the Local Station via a mobile network that is easily available everywhere and makes the system reliable.

### System requirements: \_\_\_\_\_

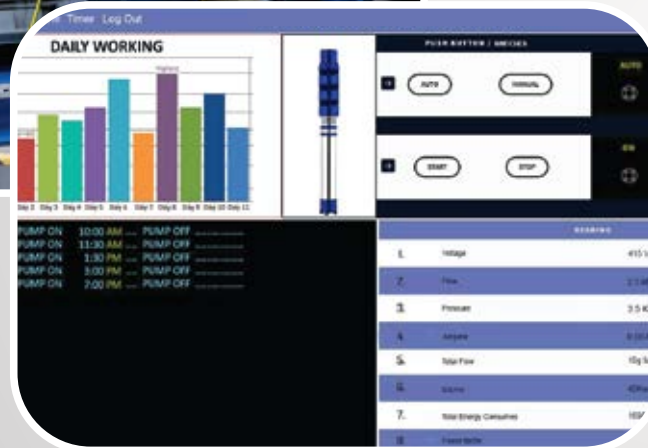
- Central Control Panel
- One telephone line at Central Station with static ID
- OPC Server/Cloud Server
- SIM Cards for each Local Pumping Station control Panels

### Running Cost \_\_\_\_\_

- Telephone line monthly payment
- SIM card monthly payments
- Annual Maintenance charges (depends on number of local station)

### Large no's of Pumps or Boosting Station can be controlled from one place

- All-in-One, Well-Integrated Solution
- Supports Multiple Wireless Solutions
- Enhanced Cyber Security



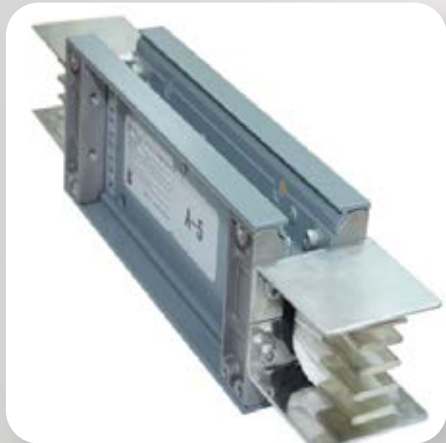
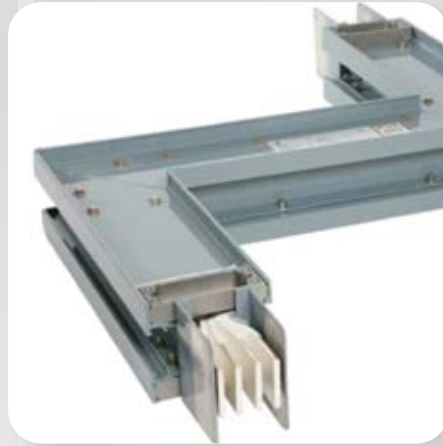
### Features \_\_\_\_\_

This solution-ready platform is suitable for the remote monitoring and control of pump stations of varying size.

Different field sites or projects may require different types of wireless connection. The open system architecture allows for 2G/3G/LTE/Wi-Fi solutions with minimal system changes.

# Expert Sandwich Bus Duct

## E-Powerline



The Bus Duct is a critical component in modern power distribution systems, offering safe and highly efficient electrical power transmission for all types of specialized applications. Our cutting-edge design and construction make the Bus Duct the top choice for those seeking reliability and flexibility in power distribution.

Experience the future of efficient power distribution with Expert's Bus Duct, delivering enhanced performance, safety, and cost-effectiveness.

Experience the future of efficient power distribution with Expert's Bus Duct, delivering enhanced performance, safety, and cost-effectiveness.

### Technical Specifications

### IEC-439 Part 2 and IS 8623 Part 2

System	415 V, 3 Phase, 4 wire, 50 Hz or 3 Phase 3 Wire
Rated Insulation Voltage	upto 1000V
Rated Current	upto 6300 A
Type	Totally enclosed. Air insulaed. Non segregated
Ingress Protection	IP 42, IP 52, IP 54, IP 65
Bus Bars Material	Electrolytic Grade Aluminium or Copper Aluminium Conductivity > 58%, Copper > 98%
Enclosure	CRCA Sheet / Aluminium Housing (optional)
Enclosure Paint Finish	Epoxy Powder Coating. RAL-7035 (other shades as required)
Bus Bar Insulation	Black PVC Insulation with colour coding for phase identification Black Matt paint for Bus Bar Rating 2500A and above
Earthing	Separate Earth bus provided on enclosure
Phase Cross Over	Optional if required

## Features

- Compact structure
- Innovative design with enclosure uses as earth
- Completely safe to use
- Low maintenance
- Low impedance
- Great mechanical strength
- Can withstand high short circuit
- Low Voltage Drop

**Expert Engineers and Automation Pvt Ltd**



# Expert Cable Tray

## E-Cabtrex

We are a leading manufacturer of high-quality cable trays and accessories, offering reliable solutions for electrical cable management across a variety of industrial and commercial sectors.

Our cable trays are designed to ensure easy installation, superior protection, and long-lasting durability for all your cabling needs. Our perforated cable trays offer an optimal solution for managing and protecting your electrical cables efficiently. Perforated cable tray is used in industrial, commercial and residential construction to route electrical wires and cables through the building structure safely.

They are typically located within the ceiling space or on the walls of a building. Perforated cable tray protect cables from damage caused by mechanical forces such as impact, vibration and compression.

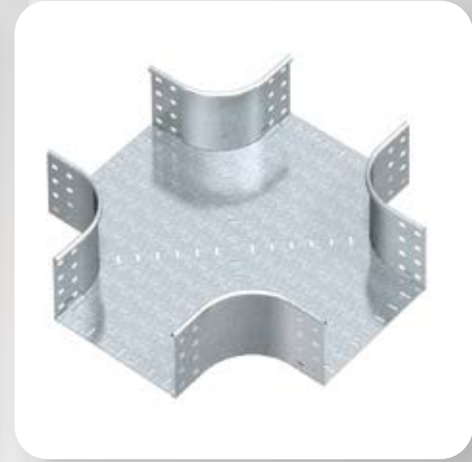
### Specifications

Width	50-1200mm
Height	25mm-200mm
Thickness	1mm-4mm
Length	2500mm-3000mm
Finish	Painted, Power Coated, Hot Dip Galvanized, Pre-Galvanized, electro Plated
MOC	MS, GI, SS, Aluminium

### Advantages

- Robust and long-lasting designs
- Quick and easy installation
- Customizable to suit project needs
- Corrosion-resistant coatings
- High load-bearing capacity

**Expert Engineers and Automation Pvt Ltd**



### Features

- Precision-manufactured for consistent quality
- Smooth edges for cable safety and handling
- Available with accessories like bends, tees, reducers, covers, and clamps
- Compatible with standard electrical accessories
- Ventilated designs for effective cable cooling

## ASSOCIATED PARTNERS



**ABB** - Medium Voltage Panels  
ABB Medium Voltage HT VCB Panels Upto 33KV

**Lauritz Knudsen** - Electrical & Automation

LK IEC 61439 TTA Panels - Enersys

LK Sandwich Busducts

LK Automation Solutions - PLC, HMI, BMS, EMS, Water Solutions



**SIEMENS**  
*Ingenuity for life*

**Siemens** - Electrical & Automation  
Siemens IEC 61439 TTA Panels – SIEPan ELITE

**C&S Electric** - Electrical & Automation

C&S IEC 61439 TTA Panels - CX



**ICAV**

**Certificate of Registration**

This is to certify that the Management System of

**EXPERT ENGINEERS**

Plot No. 871-682, 880/2 Industrial Area, Okhla, New Delhi-110026, India  
 Dist. Khirwar, Tees, Ph. : 301157, India

has been certified by ICAV and found to be in compliance with the requirements of the standard

**ISO 14001:2015**  
 (Environmental Management Systems)

This certificate is valid for the following scope:

Manufacturers of 415W/1100V LT Panels, 11kV/33kV HT Panels, Compact Sub Stations and Bus Duct

Certificate No.	IN/0086/04/2015
Issued Registration Date	24/03/2015
Certificate Valid Date	30/03/2017
Certification Expiry/Re Certification Date	30/03/2018

**IAF**

**INDIAN CERTIFICATION AGENCY**

**ISO 14001:2015**

**RE-ACCREDITED BY ICAV**

10, Post Post, Delhi District, India. Tel: 011-26100000, Fax: 011-26100001  
 E: 1147545015, info@icavcerts.com, www.icavcerts.com  
 ICAV is a member of the International Accreditation Forum (IAF) and is a member of the Indian Standards Association (ISA).  
 ICAV is a member of the International Accreditation Forum (IAF) and is a member of the Indian Standards Association (ISA).



**Icv**

# Certificate of Registration

This is to certify that the Management System of  
**EXPERT ENGINEERS**  
 Plot No. 87/1-88/1, 40/50 Industrial Area, Okhla, New Delhi, India  
 Dist Khirwar, Tq. Raj., 201107, India

has been audited by Icv and found to be  
 in compliance with the requirements of the standard

## ISO 45001:2018

(Occupational Health and Safety Management Systems)

This certificate is valid for  
 the following scope:

Manufacturers of 450V-1100V LT Panels, 11kV/33kV HT Panels,  
 Compact Sub Stations and Bus Duct

Certificate No.	ICV/0474/5-2018
Initial Registration Date	26/03/2019
Certificate Issue Date	26/03/2019
Validity of the Certificate	30/03/2020

**IAF**

**ISO 45001:2018**

**CONFORMANT**

**ICV**

**ICV ASSOCIATED PVT. LTD.**

(15, Plot No. 88/1, 40/50 Industrial Area, Okhla, New Delhi - 110026)  
 Tel: +91-11-87540273, info@icvcertification.com, www.icvcertification.com

	<b>KARNATAKA STATE POLLUTION CONTROL BOARD</b> <b>S.P.I. Phase II, KROD Industrial Area, Hosur</b> Phone: 08045324242	
<b>Registered</b>		
File No: KSPCB/Hosur/Tripura/17833/2023-2024/046-098	Date: 18.11.2023	
Ref to : 123/10		
<b>S.P.I. Export Enquiries</b>		
S-1 (2021-2022) Industrial Area, Hosur/Hosur Taluk/Tripura District/Hosur		
<b>Re:-</b> Authorization for operating a facility for Collection, Storage, Treatment, Disposal and Transportation (CSTDT) of Hazardous Waste from Industries and Other Waste-Generated and Transportation of Hazardous Waste, HSA.		
<b>Sub:-</b> Authorization requested on 15.07.2023 and subsequent correspondence.		
<b>Re:</b>		
1. Number of authorisation (SP/23/2023/2024/Hosur/17833)		
2. Application Number - KSPCB/HOSUR/2023/2024/046		
3. Ping of S.P.I. Export Enquiries is hereby granted as authorisation issued to the applicant subject to compliance with the following conditions:		
4. Authorisation is valid for the period stipulated in S-1, S-2, S-3, S-4, S-5, S-6, S-7, S-8, S-9, S-10, S-11, S-12, S-13, S-14, S-15, S-16, S-17, S-18, S-19, S-20, S-21, S-22, S-23, S-24, S-25, S-26, S-27, S-28, S-29, S-30, S-31, S-32, S-33, S-34, S-35, S-36, S-37, S-38, S-39, S-40, S-41, S-42, S-43, S-44, S-45, S-46, S-47, S-48, S-49, S-50, S-51, S-52, S-53, S-54, S-55, S-56, S-57, S-58, S-59, S-60, S-61, S-62, S-63, S-64, S-65, S-66, S-67, S-68, S-69, S-70, S-71, S-72, S-73, S-74, S-75, S-76, S-77, S-78, S-79, S-80, S-81, S-82, S-83, S-84, S-85, S-86, S-87, S-88, S-89, S-90, S-91, S-92, S-93, S-94, S-95, S-96, S-97, S-98, S-99, S-100, S-101, S-102, S-103, S-104, S-105, S-106, S-107, S-108, S-109, S-110, S-111, S-112, S-113, S-114, S-115, S-116, S-117, S-118, S-119, S-120, S-121, S-122, S-123, S-124, S-125, S-126, S-127, S-128, S-129, S-130, S-131, S-132, S-133, S-134, S-135, S-136, S-137, S-138, S-139, S-140, S-141, S-142, S-143, S-144, S-145, S-146, S-147, S-148, S-149, S-150, S-151, S-152, S-153, S-154, S-155, S-156, S-157, S-158, S-159, S-160, S-161, S-162, S-163, S-164, S-165, S-166, S-167, S-168, S-169, S-170, S-171, S-172, S-173, S-174, S-175, S-176, S-177, S-178, S-179, S-180, S-181, S-182, S-183, S-184, S-185, S-186, S-187, S-188, S-189, S-190, S-191, S-192, S-193, S-194, S-195, S-196, S-197, S-198, S-199, S-200, S-201, S-202, S-203, S-204, S-205, S-206, S-207, S-208, S-209, S-210, S-211, S-212, S-213, S-214, S-215, S-216, S-217, S-218, S-219, S-220, S-221, S-222, S-223, S-224, S-225, S-226, S-227, S-228, S-229, S-230, S-231, S-232, S-233, S-234, S-235, S-236, S-237, S-238, S-239, S-240, S-241, S-242, S-243, S-244, S-245, S-246, S-247, S-248, S-249, S-250, S-251, S-252, S-253, S-254, S-255, S-256, S-257, S-258, S-259, S-260, S-261, S-262, S-263, S-264, S-265, S-266, S-267, S-268, S-269, S-270, S-271, S-272, S-273, S-274, S-275, S-276, S-277, S-278, S-279, S-280, S-281, S-282, S-283, S-284, S-285, S-286, S-287, S-288, S-289, S-290, S-291, S-292, S-293, S-294, S-295, S-296, S-297, S-298, S-299, S-300, S-301, S-302, S-303, S-304, S-305, S-306, S-307, S-308, S-309, S-310, S-311, S-312, S-313, S-314, S-315, S-316, S-317, S-318, S-319, S-320, S-321, S-322, S-323, S-324, S-325, S-326, S-327, S-328, S-329, S-330, S-331, S-332, S-333, S-334, S-335, S-336, S-337, S-338, S-339, S-340, S-341, S-342, S-343, S-344, S-345, S-346, S-347, S-348, S-349, S-350, S-351, S-352, S-353, S-354, S-355, S-356, S-357, S-358, S-359, S-360, S-361, S-362, S-363, S-364, S-365, S-366, S-367, S-368, S-369, S-370, S-371, S-372, S-373, S-374, S-375, S-376, S-377, S-378, S-379, S-380, S-381, S-382, S-383, S-384, S-385, S-386, S-387, S-388, S-389, S-390, S-391, S-392, S-393, S-394, S-395, S-396, S-397, S-398, S-399, S-400, S-401, S-402, S-403, S-404, S-405, S-406, S-407, S-408, S-409, S-410, S-411, S-412, S-413, S-414, S-415, S-416, S-417, S-418, S-419, S-420, S-421, S-422, S-423, S-424, S-425, S-426, S-427, S-428, S-429, S-430, S-431, S-432, S-433, S-434, S-435, S-436, S-437, S-438, S-439, S-440, S-441, S-442, S-443, S-444, S-445, S-446, S-447, S-448, S-449, S-450, S-451, S-452, S-453, S-454, S-455, S-456, S-457, S-458, S-459, S-460, S-461, S-462, S-463, S-464, S-465, S-466, S-467, S-468, S-469, S-470, S-471, S-472, S-473, S-474, S-475, S-476, S-477, S-478, S-479, S-480, S-481, S-482, S-483, S-484, S-485, S-486, S-487, S-488, S-489, S-490, S-491, S-492, S-493, S-494, S-495, S-496, S-497, S-498, S-499, S-500, S-501, S-502, S-503, S-504, S-505, S-506, S-507, S-508, S-509, S-510, S-511, S-512, S-513, S-514, S-515, S-516, S-517, S-518, S-519, S-520, S-521, S-522, S-523, S-524, S-525, S-526, S-527, S-528, S-529		

[illegible][illegible]

CERTIFICATE



# EUROGLOBAL

## CERTIFICATIONS (UK) LTD

### Certificate of Compliance

for Supply Services that the following have at

### EXPERT ENGINEERS

PLANT AND SITE: EXPERT INDUSTRIAL, AGEN, REPAIRERS, CONTRACTORS,  
AIRPORTS, RAILWAYS, RAILWAYS, AIRPORTS

has been assessed for compliance in accordance with the assessment and held up for compliance at  
Birmingham City College, Birmingham (BIRMINGHAM) & Birmingham (BIRMINGHAM)

PROVIDED INFORMATION: ELECTRICAL, CONTROL, SIGNALS AND SECURITY

(Valid from 1st April 2017 to 31st March 2018)

The Certificate is valid for the period of 12 months from the date of issue and is subject to the conditions of use. The Certificate is valid for the period of 12 months from the date of issue and is subject to the conditions of use. The Certificate is valid for the period of 12 months from the date of issue and is subject to the conditions of use.

**Certificate No.** EET/118

**Date of Validity/Expiry** 01/04/2017 31/03/2018

**1<sup>st</sup> Issuance/Date of Issue** 01/04/2017

**2<sup>nd</sup> Issuance/Date of Issue** 01/04/2017

**Issue Date** 01/04/2017

**Expiry Date** 31/03/2018



Authorized Agency





The Certificate is a property of EUROGLOBAL. It is not to be used for any other purpose than the one for which it was issued. It is not to be used for any other purpose than the one for which it was issued. It is not to be used for any other purpose than the one for which it was issued.



ISO 9001:2015  
ISO 14001:2015  
ISO 45001:2018

**15000+**  
Panels Delivered

**1500+**  
Happy Customers

**CE**  
Certification

**40+**  
Engineers

**More Than**  
**2000+**  
Installations



**Electrical Control Panel Manufacturer**

## EXPERT ENGINEERS

Expert Engineers are a fast growing professionally managed engineering company engaged in the manufacturing of custom built low voltage Electrical Control Panels switchboard/control panel catering the needs of building, water, power and industrial sectors through its products to empower and enlighten the lives of people.

our qualified professionals with best of their knowledge, experience and efforts bring together the human expertise and technology associated with innovations and creativity to generate brilliance.

## PREFER US?

- Assiduous and experienced professionals
- Quality products engineered with cutting edge technology
- Competitive prices
- On time delivery
- 100% client satisfaction assured





Auto DG Synchronizing Panel

**Client:** BHEL  
**Location:** BHEL, Hyderabad  
**Application:** 2 x 500 KVA DG Synchronizing Panel



Manual DG Synchronizing Panel

**Client:** MES  
**Location:** Meerut, Uttar Pradesh



Power Control Center

**Client:** Dungarpur Medical College  
**Location:** Dungarpur, Rajasthan  
**Application:** Complete Power Distribution in Building



Power Control Center

**Client:** JBM Auto  
**Location:** Pithampur, Madhya Pradesh  
**Application:** Plant Main LT Panel



Auto DG Switching Panel

**Client:** JCB  
**Location:** Ballabgarh, Uttar Pradesh



Power Control Center

**Client:** Indian Oil Corporation Limited, IOCL  
**Location:** Bihar  
**Application:** 160A, 250A, 400A, 630A DB for Fueling Station



Power Control Center

**Client:** Hindustan Petroleum Corporation Limited  
**Location:** Bareilly, Uttar Pradesh  
**Application:** 160A, 400A DB for Fueling Station



Power Control Center

**Client:** Northern Railway  
**Location:** Ghaziabad Locoshed, Delhi NCR  
**Application:** 160A, 400A DB for Fueling Station



Power Control Center

**Client:** Ginger Hotel  
**Location:** Sanand, Gujarat  
**Application:** Complete Power Distribution in Hotel



Scania Gearbox Testing Kit

**Client:** Indian Army  
**Location:** Udampur, J&K  
**Application:** Testing Jig of Scania Gearbox



Fountain Panel

**Client:** DLF, Camelias  
**Location:** Gurgaon, Haryana  
**Application:** Centralized Panel for Water Garden



Actuator Panel

**Client:** Water Treatment Plant  
**Location:** PHED, Haryana  
**Application:** Remote and Local Switching of Valve Actuators



500 KVA AMF Panel with Bypass Changeover

**Client:** Base Hospital, MES  
**Location:** Delhi Cantt, New Delhi



Pump Automation Panel

**Client:** WAPCOS Ltd  
**Location:** Amabala, Haryana  
**Application:** Remote and Local Switching of Valve Actuators



Power Control Center

**Client:** AIIMS, Delhi  
**Location:** New Delhi



4000A Busduct

**Client:** NSRY Project  
**Location:** MES, Portblair



Musical Fountain Panel

**Client:** Ramalingeswara park  
**Location:** Orissa  
**Application:** Controlling of complete fountain including 90 nozzles and Fire show



FRP Machine Panel

**Client:** Cable Manufacturers  
**Location:** Industries



# WORKS IN DIFFERENT SECTOR







## What does it mean to provide excellent customer service?

Providing excellent customer service means going the extra mile in making sure a customer is happy and satisfied with a company's products or services. It also involves providing service to a customer in a timely, pleasant manner. In order to provide excellent customer service, one needs superb communication and problem resolution skills.

**Talk About Exceeding Expectations:** Customer service is all about meeting and exceeding the expectations of the customer. The expectations could be different for each type of business- but the principle is the same. Customers expect those assisting them to be extremely helpful- positive and informative.

- Excellent customer service involves meeting and surpassing expectations
- Excellent customer service means making each and every aspect of the customer's experience an absolutely positive one



Call  
+91 928-9158-281



Scan to Call



Whatsapp  
+91 928-9158-281



Scan to Whatsapp



Email  
[support@expertengineers.co.in](mailto:support@expertengineers.co.in)



Scan to Email

# CONTACT US

[www.expertengineers.co.in](http://www.expertengineers.co.in)



Scan to Call



Scan to Whatsapp



Scan to Email

*"Established in 2009 **EXPERT ENGINEERS** are among top manufacturers of Electrical control Panels"*



## Head Office

Block B, Plot No-54, Pocket 10, Sector 13,  
Dwarka, New Delhi, Delhi, 110078

**Landline No** : 011 4985 1165

**Mob** : +91 99718 70008

**Email** : [Expert.rishi@gmail.com](mailto:Expert.rishi@gmail.com)

**Email** : [sales@expertengineers.co.in](mailto:sales@expertengineers.co.in)

**Email** : [gaurav@expertengineers.co.in](mailto:gaurav@expertengineers.co.in)

**Website** : [www.expertengineers.co.in](http://www.expertengineers.co.in)

## Works

Plot No. E11-E80,  
RIICO Ind. Area, Khushkhera, Bhiwadi,  
Rajasthan 301707

**Phone no** : 9711609607

**Landline No** : 0149320062634

**Email** : [saurabh@expertengineers.co.in](mailto:saurabh@expertengineers.co.in)

## Our Branches

### JAIPUR

**Email** : [devesh@expertengineers.co.in](mailto:devesh@expertengineers.co.in)

**Phone No** : 9289158291

### BHOPAL

**Email** : [ks.mishra@expertengineers.co.in](mailto:ks.mishra@expertengineers.co.in)

**Mob No** : 7428091922

## Our Presence

### LUCKNOW

**Email** : [Sales@expertengineers.co.in](mailto:Sales@expertengineers.co.in)

**Phone No** : 7428596456

### HARYANA

**Email** : [anil.choudhary@expertengineers.co.in](mailto:anil.choudhary@expertengineers.co.in)

**Phone No** : 9289973410

### MUMBAI

**Email** : [sumit@expertengineers.co.in](mailto:sumit@expertengineers.co.in)

**Phone No** : 9220102279